

Save Time With a Digital Crash Reporting Solution

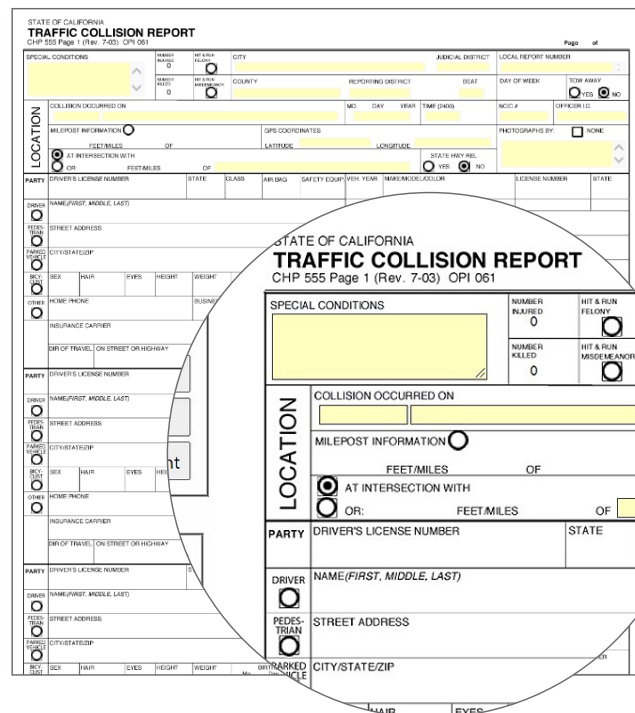
For law enforcement, saving time can mean saving lives. When responding to a traffic accident, officers are required to collect data and write detailed crash reports while trying to clear the scene quickly and make it to their next call for service.

With Tyler Technologies' Enforcement Mobile solution, powered by Brazos®, users can take advantage of its powerful Electronic Crash module. This tool helps officers cruise through data collection and crash report writing with a streamlined, digital data capturing process. This solution allows officers to complete reports on any agency issued device on iOS, Android, and Windows operating systems. This functionality works anywhere, even without cellular or Wi-Fi connectivity.

With the Electronic Crash Module for Crash Reporting, agencies experience the following benefits:

- Digital completion and submission of state crash reports
- Ability to provide driver exchange information and tow forms in the field
- Autofill subject and vehicle information utilizing barcode scanner or camera
- Complete accident, statistical, and mapping reporting capabilities
- Integrates with any law enforcement records management systems, state reporting systems, court applications, or custom applications
- Streamlined report distribution to LexisNexis or Carfax

...continued on next page

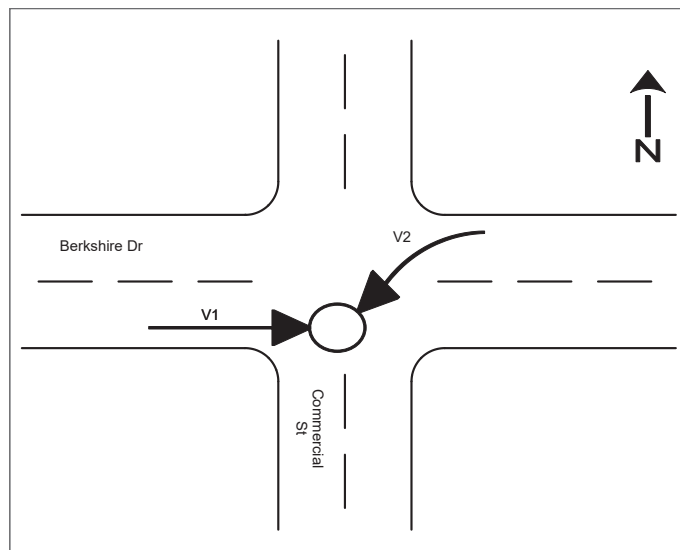


Electronic Crash provides a user-friendly crash report writing interface with live validation.

For more information, visit tylertech.com/publicsafety or email PublicSafetyInfo@tylertech.com

Experience the Value of a Complete Data Citation Tool in the Field

- Officers can capture and store photos and audio of any crash scene, ensuring peace of mind that vital data is secure
- Information sharing is simple and only needs to be gathered once, saving time and improving accuracy
- The digital process allows agencies to go paperless, saving time
- Officers spend less time on the side of the road collecting data with the ability to scan and import driver and vehicle data seamlessly



Electronic Crash offers accident diagrams for users to easily visualize data.

Associated Modules

- Traffic Citations and Warnings
- Driver Exchange
- Towed Vehicle Reports

The image displays three screenshots of the Enforcement Mobile application interface. The first screenshot, titled 'Accident Report - A', shows the 'Invest' tab with fields for City (FOUNTAIN VALLEY), County (ORANGE), Beat, Latitude, Longitude, Hit / Run, and Dispatch Notified. A 'Get GPS' button is visible. The second screenshot, also titled 'Accident Report - A', shows the 'Factor' tab with fields for Party At Fault (1), Party Driver Cited (checked), Primary Collision Factor (A VC Section Violation), Citation, Offense Search (22350), and Category (*Top Violations). The third screenshot, titled 'ARCA Party GD', shows the 'Main' tab with fields for Party # (1), Party Type (Driver), Vehicle Type (1 Passenger Car, Station Wagon, Jee), Speed Limit, Dir, On, Special Info, and a Party Incomplete checkbox.

Take a closer look at the Enforcement Mobile interface. By pressing the 'Get GPS' button, officers can retrieve the latitude and longitude of any location required in a crash report.

Trusting in a Long-Term Partner

Enforcement Mobile enables agencies to complete Electronic Citations and Electronic Crash activities in a flexible and efficient manner. Tyler provides around-the-clock support before, during, and after purchase, ensuring that agencies maximize all benefits their solutions have to offer. When agencies work with Tyler, it's the beginning of a long-term partnership and commitment to success.

Whatever your agency's needs are for crash reporting in the field, the Enforcement Mobile's Electronic Crash module has you covered.

Empowering people who serve the public®

